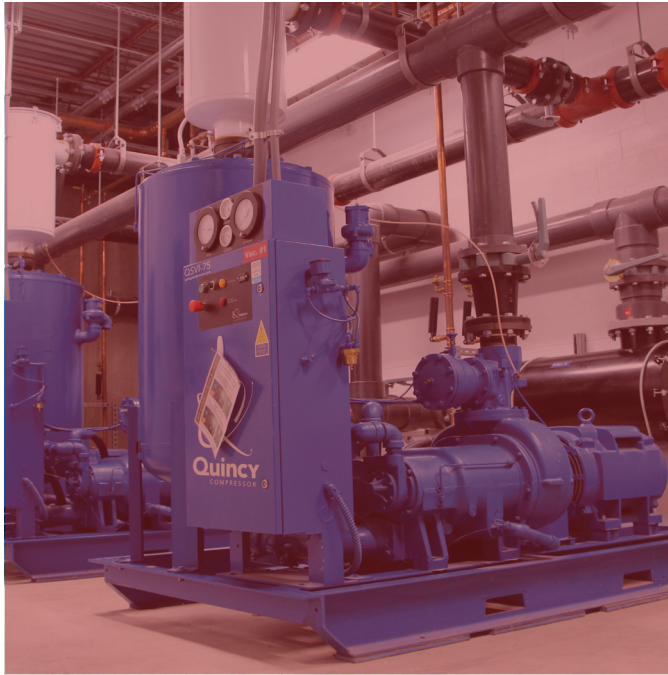


John Henry Foster

PRODUCT LINE CARD



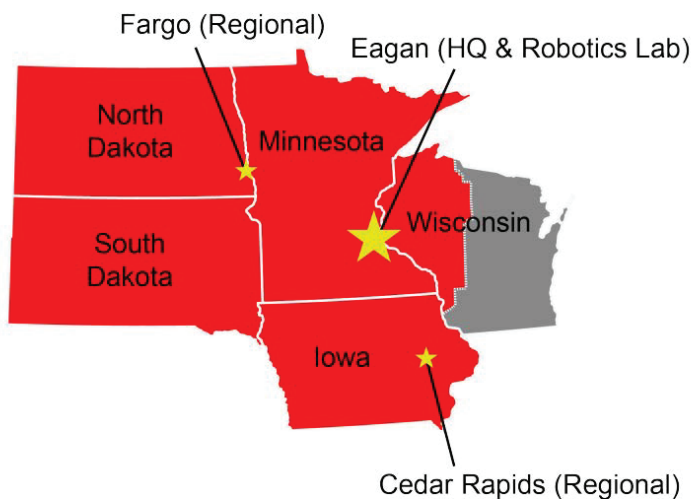
JHFOSTER
John Henry Foster.com
Automation • Robotics • Compressed Air • Service

Your Partners For High-Quality Distribution & Service

John Henry Foster (JHFoster) is a leading distributor and service provider of automation and compressed air systems. Our mission is to assist companies like yours automate their manufacturing applications to make the process a positive journey. We are committed to providing successful solutions that exceed production demands, reduce costs, and increase overall efficiencies.

Headquartered in Eagan, MN, with an advanced robotics training facility and UL 508A certified control panel shop, we also offer a fully-equipped team of mobile technicians who provide service to the 5-state area. When it comes to regular maintenance, servicing, and unforeseen repairs for your automation, robotics, and compressed air system equipment, we work to bring your equipment back to peak optimal condition and keep you under warranty.

We have a wealth of knowledge and experience in working with parts and systems by most brands and a large inventory of equipment and accessories to help you stay focused on business. Contact us today to learn more about how you might benefit from knowing us.



Our Locations

HEADQUARTERS Eagan, MN

3103 Mike Collins Dr
Eagan, MN 55121
651.452.8452

ROBOT LAB Eagan, MN

980 Lone Oak Rd
Eagan, MN 55121
651.452.8452

REGIONAL West Fargo, ND

1016 5th Ave, Suite 3
West Fargo, ND 58078
651.452.8452

REGIONAL Cedar Rapids, IA

935 Metzger Dr
Hiawatha, IA 52233
319.200.1316

Our team of experts are ready to assist you and answer any of your questions and discuss possibilities to utilize these products in your work environment. Contact us at 855.688.0043, solutions@jhfooster.com or visit us at jhfooster.com

COMPRESSED AIR

CLIMATE CONTROLLED COMPRESSORS

GARDNER DENVER - Reciprocating: ½ HP – 25 HP

POWEREX - Reciprocating: 1 HP – 15 HP

QUINCY - Reciprocating: ½ HP – 25 HP

OIL LUBRICATED COMPRESSORS

GARDNER DENVER - Rotary screw: 5-500 HP, reciprocating: ½ – 30 HP, hydrovane

QUINCY - Rotary screw/reciprocating: ½ – 350 HP

SAUER COMPRESSORS USA - Reciprocating 2-4 stage high pressure compressors and boosters 100-6000 PSIG

OIL-FREE AND OIL-LESS COMPRESSORS

GARDNER DENVER - Water-sealed: 20 HP – 150 HP; Rotary Screw: 100 HP – 400 HP; Reciprocating: 3/4 HP – 15 HP; Scroll: 2 HP – 40 HP

GARDNER DENVER THOMAS PUMP - Diaphragm, rotary vane, linear, articulating piston, WOB-L piston, miniature

POWEREX - Super quiet scroll and reciprocating: 3 HP – 40 HP

QUINCY - Scroll: 2 HP – 30 HP

ROGERS MACHINERY CO - Rotary screw: 20 HP – 500 HP

MEDICAL AND VACUUM PACKAGES

DEKKER VACUUM TECHNOLOGIES - Liquid ring, rotary vane

GARDNER DENVER - Scroll

POWEREX - Scroll, piston, rotary vane and claw

ROGERS MACHINERY CO - Rotary screw, oil-free

DRYERS

GARDNER DENVER - Refrigerated cycling, non-cycling, regenerative, digital scroll

NANO PURIFICATION SOLUTIONS - Refrigerated, regenerative dryers and breathing air systems

PARKER - Refrigerated, regenerative dryers and breathing air systems

QUINCY - Refrigerated cycling, non-cycling, and regenerative

ZEKS - Refrigerated cycling, non-cycling, and regenerative

PLANT AIR PIPING

PARKER - Transair aluminum and stainless steel piping system

QUINCY - AIRnet aluminum and stainless steel piping system

FILTERS

GARDNER DENVER - Particulate, coalescing, vapor, mist eliminator

NANO PURIFICATION SOLUTIONS - Particulate, coalescing, vapor, mist eliminator

PARKER - Particulate, coalescing, vapor, mist eliminator

SOLBERG - Compressor and vacuum pump inlet filters and silencers

ZEKS - Particulate, coalescing, vapor, mist eliminator

FLUID COOLING SYSTEMS

NANO PURIFICATION SOLUTIONS - Process chillers

PARKER - Process chillers

BLOWERS

AERZEN - Positive displacement, hybrid to 51 PSI

VACUUM PUMPS

DEKKER VACUUM TECHNOLOGIES - Water and oil-sealed liquid ring, lubricated and dry rotary vane: 1/4 HP-200 HP

GARDNER DENVER THOMAS PUMP - Diaphragm, rotary vane, linear, articulating piston, WOB-L piston

QUINCY - Industrial rotary screw: VFD rotary screw, dry claw, vane

NITROGEN GENERATION

NANO PURIFICATION SOLUTIONS - Membrane generators, PSA nitrogen generators

PARKER - PSA nitrogen generators

ACCESSORIES

CONTROL DEVICES LLC - Drain-All, WaterHog fail-safe automatic condensate drains

NANO PURIFICATION SOLUTIONS - Oil/water separators

PARKER - Oil/water condensate separators, air filtration

QUINCY - Pressure flow controller

SAMUEL PRESSURE VESSEL GROUPS - Air Tanks

ZEKS - Pressure flow controller, oil/water separators

ROBOTICS

ROBOTICS

INTELLIGENT ACTUATOR INC - IX SCARA robots, TT-Table top robot, controllers

KAWASAKI - 6-axis robots, pick & place robots, dual arm SCARA robots

STAUBLI - Industrial SCARA 4-axis robots, 6-axis robots

TECHMAN ROBOT - Collaborative robots with build-in vision

ROBOTIC ACCESSORIES

80/20 INC - Mobile bases, tables, guarding

BIMBA | VACCON - Vacuum tool end effector

DES-TA-CO - Pneumatic grippers, electric grippers, end-of-arm tooling and tool changers

TECHMAN ROBOT - Robot stands, mobile work stations

AUTOMATION

SAFETY

80/20 INC - Guarding, enclosures, workstations

BALLUFF* - Safety over IO link, light curtains, door switches, safety sensors

BIMBA | MEAD - Pneumatic two hand anti-tie-down controls, lock-out valves

EMERSON | ASCO - Lock-out valves, power isolation bases

EMERSON | AVENTICS - Lockout valves, cylinder locking and holding units, power isolation bases

ZSI-FOSTER (FOSTER MANUFACTURING) - Safety quick couplers/blow guns

HYDRAULICS

BIMBA | TRD - NFPA, MH medium duty and HH series heavy-duty industrial hydraulic cylinders, compact hydraulic

EMERSON | AVENTICS - NFPA medium and high pressure heavy-duty industrial hydraulic cylinders

ZSI-FOSTER (FOSTER MANUFACTURING) - Quick disconnect couplers

SERVO REDUCERS AND COUPLINGS

NIDEC-SHIMPO* - Inline and right-angle planetary gearboxes, servo worm gearboxes, cycloidal gearboxes

STOBER* - Gearboxes, servo reducers, power transmission gearboxes, gearmotors, servo motors

GUARDING & ACCESSORIES

80/20 INC - T-slotted aluminum extrusion and accessories

ELECTRIC

ELECTRIC AUTOMATION

BALLUFF* - IO link sensors, RFID, IO link fieldbus masters, HUBS, RFID vision, LED stack lights, displays

BOSCH REXROTH* - IndraMotion MTX micro, IndraMotion MTX standard, performance, and advanced, servomotors, motion controllers and drives (amplifiers), direct drive motors, servo drives & motors, ball rail linear guides, high precision ball screws, linear guides, linear axes, linear guide systems, linear screw assemblies, electromechanical cylinders, integrated measuring systems, motion & machine controls & CNC, operator panels, embedded PC, machine cut panels

ELECTRIC ACTUATORS

BIMBA - Original line electric rod type

BIMBA | INTEK - Belt, ballscrew, rack and pinion, thrusters, idlers, linear servo, gantry systems

BOSCH REXROTH* - Linear motors, ball rail linear guides, high precision ball screws, linear motion systems, smart function kit, electromechanical cylinders, linear guides, linear axes, linear screw assemblies, linear guide systems, linear screw assemblies, integrated measuring

INTELLIGENT ACTUATOR INC - ROBO Cylinder™, linear, rotary actuators, grippers, controllers, mini ROBO cylinder

PNEUMATIC

PNEUMATIC FILTERS

BIMBA | MFD - Particle removal filters, regulators, and lubricators

EMERSON | ASCO - In-line oil and particle removal filters, regulators and lubricators, precision regulators

EMERSON | AVENTICS - In-line oil and particle removal filters, regulators and lubricators, precision regulators, stainless steel air prep

AUTOMATION (CONT.)

PNEUMATIC (CONT.)

PNEUMATIC VALVES

AAA PRODUCTS - Mechanical, pilot, or solenoid operated valves

BIMBA | ACRO - Pneumatic and solenoid pinch valves

BIMBA | MEAD - Solenoid, control and specialty valves

BIMBA | MFD - Solenoid, control and specialty valves

BIMBA | PNEUMADYNE - Mechanical, pilot, or solenoid operated

EMERSON | ASCO - Mechanical, pilot, or solenoid operated, in-line, manifold and sub-base mountings, fieldbus (Ethernet, DeviceNet, Profibus etc.), poppet valves, ISO 1 – 3

EMERSON | AVENTICS - Manual/mechanical, pilot or solenoid operated, in-line, manifold and subbase mounted, fieldbus (EtherNet, DeviceNet, Profibus, etc.), poppet valves, ceramic sliding plates, ISO 1-4, safety, flow control, check, shuttle, quick exhaust, relay

HUMPHREY - Mechanical, pilot, or solenoid operated, pressure and vacuum, in-line, stackable, manifold and sub-base mountings

PNEUMATIC ACTUATORS

ADVANCE AUTOMATION - Air cylinders

BIMBA - Original Line® stainless steel air cylinders, Ultrac® magnetic coupled rodless, Flat-I®, Flat-II® and Square Flat® stainless steel low profile, PneuTurn® rotary actuators, linear thrusters, position feedback, DoubleWall® NFPA, ISO 6431 & 6432 metric cylinders, feedback, pneumatic grippers (BPGS)

BIMBA | MEAD - Air actuators and presses

BIMBA | MFD - Extruded thrusters, angular and parallel grippers

BIMBA | TRD - NFPA actuators in aluminum, steel and stainless steel, presses

EMERSON | ASCO - NFPA air cylinders, rodless, air bellows, linear slides, ISO/VDMA, rotary actuators

EMERSON | AVENTICS - NFPA air cylinders, rodless, short-stroke, compact, ISO 15552 (ISO/VDMA), mini, round, guided, bellows, slide units, diaphragm-type, mobile type, cylinder-valve units, rotary actuators, grippers

VACUUM CUPS & GENERATORS

BIMBA | VACCON - Vacuum generators, cups and air amplifiers

EMERSON | ASCO - Vacuum generators, cups and sensors

EMERSON | AVENTICS - Vacuum generators, cups and sensors, non-contact transfer units

PISCO - Vacuum generators, cups and sensors

FITTINGS, COUPLERS, HOSES, TUBING

BIMBA | PNEUMADYNE - Barbed, threaded, electroless nickel, brass, and stainless steel

EMERSON | ASCO - Push-in tube fittings, nickel plated brass, and World Thread fittings

EMERSON | AVENTICS - Push-in fittings (polymer and nickel plated brass), metric tubing, tubing accessories

FRELIN WADE CO - Polyurethane, polyethylene, nylon, PVC tubing, re-coil assemblies and fittings, blowguns

PISCO - Push-in tube fittings, rotary joints and ball valves

ZSI-FOSTER (FOSTER MANUFACTURING) - Quick disconnect fittings, blow guns, recoil hoses and fittings

PNEUMATIC ACCESSORIES

ACE CONTROLS - Shock absorbers, velocity and feed controllers, gas springs, and hydraulic dampers

BIMBA - Alignment couplers, flow control valves and 3 & 4 way disc valves

BIMBA | MEAD - Flow controls, timers, relays, and sensors

BIMBA | PNEUMADYNE - Air jets, fittings, and manifolds

DE-STA-CO - Manual and pneumatic clamps

EMERSON | ASCO - Sintered bronze and shell type mufflers, flow controls, check valves, tubing

EMERSON | AVENTICS - Valves (safety, flow control, check, shuttle, quick exhaust, relay), silencers, grippers, timing volumes, regulators, tubing & fittings

GENERANT - Check valves, needle valves, regulators, relief valves

ZSI-FOSTER (FOSTER MANUFACTURING) - Cushioned clamping and support systems

OTHER SUPPLIERS

ADVANTECH B&B SMARTWORX*

AIR-MITE DEVICES, INC
 AIRPIPE
 AIRTX INTERNATIONAL
 ALADCO
 ALUMI-TEC INCORPORATED
 AMERICAN INDUSTRIAL HEAT TRANSFER
 ARROW PNEUMATICS, INC
ATLANTA DRIVE SYSTEMS*
 AUER SIGNAL
 BACO CONTROLS, INC
 BEACH FILTER PRODUCTS
 BEKO CONDENSATE SYSTEMS
 BI-TORQ VALVE AUTOMATION
 BILA
 BUCHER HYDRAULICS | DYNA-LIFT®
 CANFIELD CONNECTOR
 CARLO GAVAZZI, INC
 CDI METERS, INC
 CONTROL LINE EQUIPMENT
 CONTROL TECHNIQUES/LERO-SOMER/NIDEC

CONVEYOR TECHNOLOGIES LTD*

COX REELS
 CURTISS WRIGHT (EXLAR)
 DELTROL
 DESOUTTER INDUSTRIAL TOOLS
 DORNER MFG CORP
 DUFF-NORTON
 DURO REELS
 DWYER INSTRUMENTS, INC
 EDCO USA
 ELLIS/KUHNKE CONTROLS
 ELMO RIETSCHLE
 ENSTO
 EUCHNER-USE, INC.

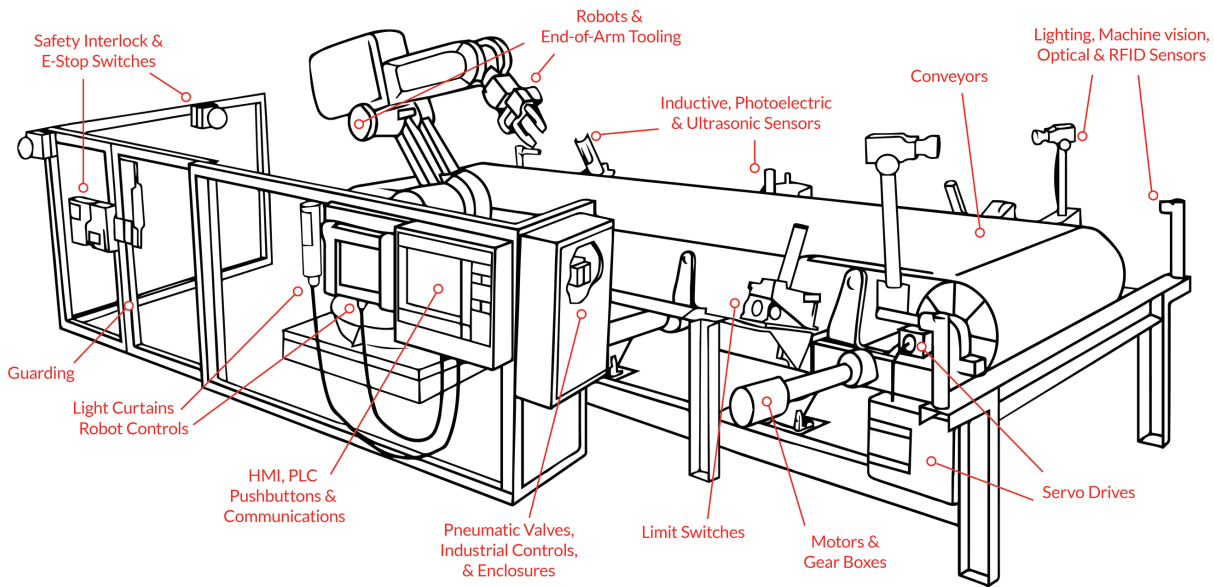
EXOR*

GARDNER DENVER (COMPAIR)
 GENERON
 GOODYEAR
 GRAVOTECH
 GUARDAIR
HAEWA*
 HANNAY REELS
 HEDLAND
 HYDROVANE
 IFM
 INGERSOLL RAND TURBO-AIR (CAMERON)
 INTEGRA ENCLOSURES
 INTEGRA STRONG BOX ENCLOSURES

JVL*

KINGSTON
 KOBELCO
 KOGANEI INTL AMERICA, INC

MANCHESTER TANK & EQUIPMENT
 MAPLE SYSTEMS
 MARSH/BELLOFRAM
 MENCOM CORPORATION
 MIDLAND METAL MANUFACTURING
 MIDWEST PRESSURE SYSTEM
 MOTORTRONICS
 MURRPLASTIK SYSTEMS, INC
 NEW AGE INDUSTRIES, INC
 NEW LONDON ENGINEERING
 NGT LLC
 NOPAK
 OETIKER
 ONROBOT
 OPTEX FA
ORIENTAL MOTOR*
PATLITE*
 PICK-IT
PIZZATO*
 POLYCONN DIVISION
 PORE
 TECHNOLOGY LIMITED
R+W COUPLING TECHNOLOGY*
 REELCRAFT
 RENCO INC
 RIETSCHLE
 ROBO-GEAR
 ROBOHAND/DESTACO
 ROBOTIQ
 ROSS CONTROLS
 ROTARY SYSTEMS
 SAGINAW CONTROL AND ENGINEERING
SANKYO AUTOMATION*
 SILVENT
 SOLAHD
 SPECIALTY MANUFACTURING CO
 SPRECHER & SCHUH
 STODDARD SILENCERS
STRONGUARD*
 SWIVELINK®
 TAPESWITCH CORPORATION
 THERMAL PRECISION
 THERMAL TRANSFER
 TOLOMATIC WASHDOWN ACTUATORS
 TRIDENT
 UNIVERSAL ROBOTS (INTEGRATOR)
 VI-CAS MANUFACTURING
 VIBCO INC
 WALDOM ELECTRONICS
WEG*
 WIELAND ELECTRIC, INC
 WIKA
ZERO-MAX COUPLINGS*



John Henry Foster distributes these products shown as well as evaluates, designs, engineers, integrates and services the entire system.

MAKING THE COMPLEX SIMPLE

TECHNOLOGY

Motion & Mechatronics

- Rotary/Linear Motion
- Sizing/Consultation
- Motors/Drives/Control
- Robots
- Conveyors

Sensors & ID

- Presence
- Inductive/Capacitive
- RFID/Bar Code
- Safety

Data

- Networks (LAN/WAN)
- HMI/Web Panel
- Remote Access/Monitor

PRECISION MACHINING

- Horizontal Milling - 5 axis
- Vertical Milling - 5 axis
- Turning (up to 14")
- Swiss Turning (approximately 3-20mm)
- CAD Solidworks
- Gibbs Surfcam

ELECTRO-MECHANICAL ASSEMBLY

- UL508A Certified Panel Shop
- Control Panel Build
- Enclosures
- Value Added Sub Assemblies: Pneumatic, Mechanical, Electrical, Build to Print