

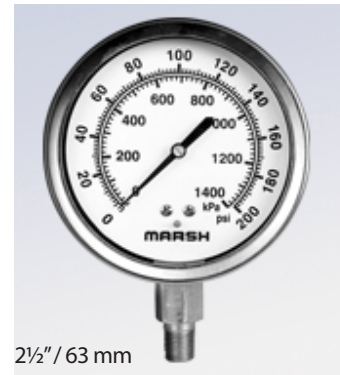
MARSH LIQUID FILLED GAUGES

MARSH gauges feature a stainless steel case for protection in harsh environments. The glycerine filling helps dampen the effects of vibration and pulsation. It also lubricates the movement, which extends the life of the gauge.



- COPPER ALLOY WETTED PARTS
- STAINLESS STEEL CASE
- GLYCERINE-FILLED

* Liquid Filled Gauge Price Special *



CONNECTION SIZE	LM	
	1/4" npt	
PSI RANGE	PART NUMBER	PRICE
15 psi	J7640P	\$13.01
30 psi	J7642P	\$13.01
60 psi	J7646P	\$13.01
100 psi	J7648P	\$13.01
160 psi	J7652P	\$13.01
200 psi	J7654P	\$13.01
300 psi	J7658P	\$13.01
400 psi	J7660P	\$13.01
600 psi	J7664P	\$13.01
1,000 psi	J7672P	\$13.01
1,500 psi	J7674P	\$13.01
2,000 psi	J7676P	\$13.01
3,000 psi	J7678P	\$13.01
5,000 psi	J7682P	\$13.01

STANDARD FEATURES

- SIZE:** 2½" (63 MM)
- CASE:** STAINLESS STEEL
- RING:** POLISHED SS, CRIMPED
- WETTED PARTS:** COPPER ALLOY
- WINDOW:** POLYCARBONATE
- DIAL:** WHITE ALUMINUM
- POINTER:** BLACK ALUMINUM
- O-RING:** EPDM
- LIQUID FILLING:** GLYCERINE
- ACCURACY:** ± 3/2/3 % OF SPAN

John Henry Foster (JHFoster) is a leading distributor and service provider for automation and compressed air systems. Our mission is to assist companies like yours automate their manufacturing applications to make the process a positive journey. We are committed to providing successful solutions that exceed production demands, reduce costs, and increase overall efficiencies.

Headquartered in Eagan, MN, with a location in Fargo, ND, we also offer a fully-equipped team of mobile technicians that provide service to the 5-state area. Contact us today at 800.582.5162 or jhfooster.com to learn more about how you might benefit from knowing us.