

apg

allison park group, inc.

SENSORS
INCORPORATED

507 Kelsey Street • Delano, MN 55328
Phone 763-972-1040 Fax 763-972-1041
Toll Free 888-920-0939
Sensorsincorporated.com

Industrial Camera & Lighting Enclosures & Mounts



FOOD APPLICATIONS • EXPLOSION-PROOF • HARSH ENVIRONMENT

EXPLOSION PROOF

Isolates ignition source in explosive environments.

Approvals:

- UL CLASSIFIED – Standard 1203 (C2-C5), 886 (L4)
- CSA Certified (Canada)-Standard C22.2 No. 30

Compliances:

- N.E.C.-Class I, Div. 1 & 2, Groups B, C & D
- Class II, Div. 1 & 2, Groups E, F & G
- NEMA 3, 4X, 7 & 9

ATEX Certification:

- L4: EEx d IIC; IP66 Rating; -20C to +40C; EN 50014: 1997; EN50018: 2000
- C2-C5: II 2 G EEx d II c; -20C to +40C; IP66; KEMA 03ATEX2460 U; EN50014: 1997; EN50018: 2000

Most current ATEX Certificate Pending.



C2/C3 SERIES

Designed for shorter inline cameras, barcode readers and laser sensors. **Internal dimensions:**
C2 – 67mm dia. window, 89mm dia./156mm long.

C3 – 75mm dia. window, 101mm dia./162mm long. Optional rear conduit fitting for straight out camera cable runs. ATEX approval.



C4/C5 SERIES

Works for longer inline cameras; security & IP cameras.

Internal dimensions:

C4 – 67mm dia window, 89mm dia./213mm long.

C5 – 75mm dia window, 101mm dia./254mm long.

ATEX approval.



L4 SERIES

Accommodates upright cameras like Cognex 5100, Matrox GT, etc. with up to 85mm ringlight. Can be fitted with brackets for power supplies, etc.

Internal dimensions:

177mm x 228mm x 125mm deep, 133mm dia. window.



Allison Park Group, Inc. designs and manufactures camera & lighting enclosures for harsh industrial environments. We offer housings for food (FDA) applications, washdown and explosive environments. We also produce custom and OEM design solutions.

NEMA 12 / IP61



L11/L15 SERIES

General purpose stainless steel enclosures for Cognex 5000, Matrox GT, National Instruments, PPT Vision A20. Kits available to accommodate longer lenses. Easy lens access for setup adjustments. Drillable cord grip handles multiple premade cables.

22C SERIES

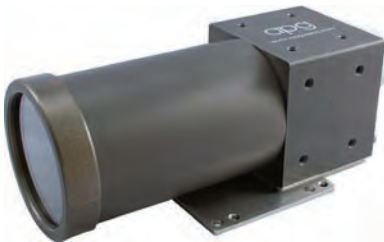
Designed specifically for 30mm x 30mm cross-section cameras. Can accommodate 50mm ringlight. Low volume, low weight, tool-less access. Excellent for end-of-arm robotic applications. Built-in air curtain option for dust or oil mist conditions. Aluminum construction, IP61/NEMA 12 rating.



30D/38D SERIES

Stainless steel body/aluminum base, IP61/NEMA 12 rating. Platform mounting allows full access to camera when cover is removed. Camera position adjustable to handle varying lens lengths. Air curtain/air

cooling options. **30D:** 58mm dia. window, 75mm height, 50mm width, 175mm long. **38D:** 68mm dia. window, 96mm height, 70mm width, 265mm long. Enclosures available in multiple lengths.



32C SERIES

Will handle cameras up to 52mm square and 75mm ringlight. Built-in air curtain option for dust or oil mist conditions. Aluminum construction, IP61/NEMA 12

rating. Arm mount allows full access to camera when barrel is removed. Tool-less access.

NEMA 4 / IP65



24C SERIES

Aluminum construction, IP65/NEMA 4 rating. Handles up to 44mm x 30mm cross-section cameras. Can accommodate 55mm ringlight. Low volume, low weight, tool-less access. Excellent for end-of-arm robotic applications. Built-in air curtain option for dust or oil mist conditions.



25R SERIES

Highly corrosion resistant 316 stainless steel construction, IP65/NEMA 4X rating. Handles up to 44mmx30mm cross-section cameras. Can accommodate 60mm ringlight. Arm mount allows full access to camera when barrel is removed.

Available in multiple barrel lengths.



35C/47C SERIES

Aluminum/stainless steel construction, IP65/NEMA 4 rating. Tool-less removal of barrel gives full access to camera. Enclosure has built-in pan, tilt and roll aiming adjustment. Built-in air cooling/air curtain options for dust or oil mist conditions. PG36 drillable cord grip allows use of multiple premade cables.

35C: 80mm barrel ID, 75mm window dia. **47C:** 105mm barrel ID, 100mm window dia. 152mm, 190mm, 228mm, 280mm and 330mm standard barrel lengths.

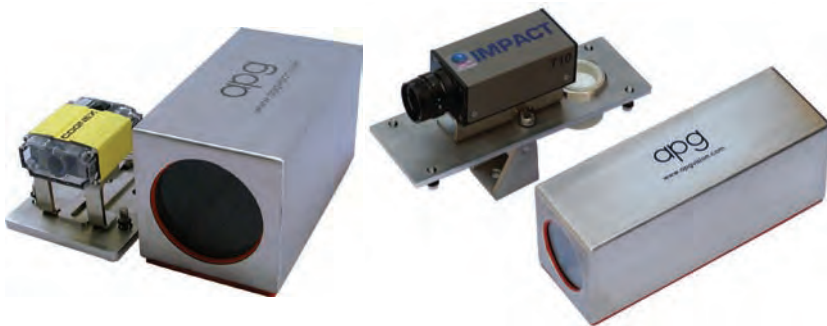
FDA-FOOD ENVIRONMENTS



Designed to work in food applications. Care taken to reduce moisture traps. Use for highly corrosive wash-down environments.

L6/L7/L10

All 316 Stainless steel construction. IP65/NEMA 4X rating. Divided case allows full lens access when cover is removed. Camera position adjustable to handle varying lens lengths. Air curtain/air cooling options. Internal ringlight mounting brackets available.



30S/38S SERIES

All 316 Stainless steel construction, IP65/NEMA 4X rating. Platform mounting allows full access to camera when cover is removed. Camera position adjustable to handle varying lens lengths. Air curtain/air cooling options.

30D: 58mm dia. window, 75mm height, 50mm width, 175mm long.

38D: 68mm dia. window, 96mm height, 70mm width, 265mm long.

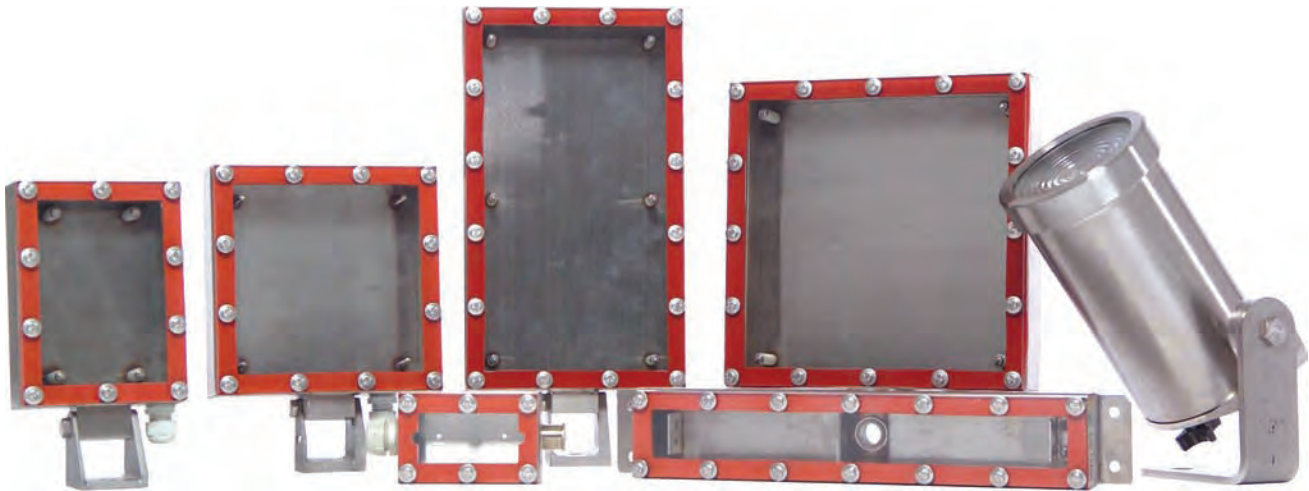
Enclosures available in multiple lengths.



35C FDA SERIES

All 316 Stainless steel construction, IP65/NEMA 4X rating. Tool-less removal of barrel gives full access to camera. Enclosure has built-in pan, tilt and roll aiming adjustment. Built-in air cooling/air curtain options for dust or oil mist conditions. PG36 drillable cord grip allows use of multiple premade cables. 80mm barrel ID, 75mm window dia. 152mm, 190mm, 228mm & 280mm standard barrel lengths.

LIGHTING ENCLOSURES



APG manufactures a wide variety of lighting enclosures. Most of these are designed for food applications and will work well in most washdown environments. Construction is normally type 316 stainless steel with an acrylic or polycarbonate window. If our existing designs don't meet your requirements, you will find that our custom designs are competitively priced.

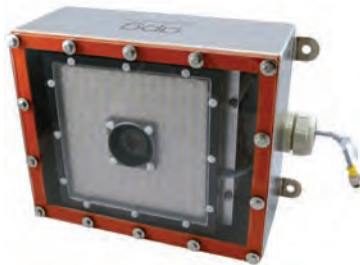


AV SERIES

All 316 Stainless steel construction, IP65/NEMA 4X rating. Pan and Tilt mounting foot.

Standard internal sizes include:

90mm x 90mm,
125mm x 125mm,
200mm x 200mm,
125mm x 250mm.



SL SERIES

All 316 Stainless steel construction, IP65/NEMA 4X rating. The SL series mount a diffuse light/ringlight & a camera.

Standard units are for upright cameras and handle:

150mm x 150mm or
300mm x 300mm
lights.



LL SERIES

All 316 Stainless steel construction, IP65/NEMA 4X rating. APG has enclosures for most 300mm linear lights. We have also built custom linear enclosures as long as 1500mm.



CAMERA ENCLOSURES

All of our camera enclosures have brackets for internally mounting ringlights with the cameras. We also make brackets for mounting lasers and spotlights in our camera enclosures.

PAN & TILT MOUNTS

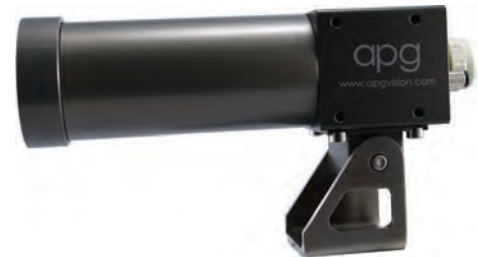
When You Don't Need An Enclosure



Camera



Monitor



Enclosure



Lighting



Laser

ACCESSORIES

Filter
Holders



Cable Glands



Heat / Sun Shields



Allison Park Group, Inc.

4055 Alpha Drive • Allison Park, PA 15101 USA • Email: sales@apgvision.com
Phone: +1 412-487-8211 • Fax: +1 412-486-3157 • Web: www.apgvision.com